



Newsletter

October 2022

Editors: Fiona Fowler & Maya Donelan

No. 113

CHAIRMAN'S LETTER

As we go to press, the Council have just adopted a borough-wide Clean Air Neighbourhoods programme, designed to improve local air quality and reduce carbon emissions by deterring cars driving through the borough. This includes the previously named South Fulham Traffic, Congestion and Pollution Reduction Scheme (TCPDR) and involves restricting "rat running" within residential zones. It has been introduced to the east of Wandsworth Bridge Road and the Council is about to trial it in the streets to the west of the road. Borough residents can still drive through and visitors/deliveries can still reach you although they may have to change their route. Smart number-plate recognition cameras will soon be installed to discourage out-of-borough drivers from using the side streets and to funnel through traffic onto the main roads. This will increase congestion and to deter this, capacity will be reduced on the main roads eg by widening pavements and installing bus lanes. We know this has been very controversial in south Fulham, particularly because of the resulting congestion on the Wandsworth Bridge Road and the diversion of traffic to the west. There has also been a woeful lack of consultation by the Council, confusing signage and a lack of communication with residents about what is and isn't permitted. For more information see: <http://democracy.lbhf.gov.uk/ieDecisionDetails.aspx?ID=4494>

Read on to find out about some major planning developments in Fulham as well as much local news and a feature on music in the borough. We also celebrate the front garden competition and hope this will inspire your gardening efforts. We look forward to seeing as many members as possible at our AGM in the wonderful Sands End Community Arts Centre in South Park.

Isobel Hill-Smith

THE FULHAM SOCIETY'S ANNUAL GENERAL MEETING

will be held at

**Sands End Arts & Community Centre (SEAC)
Peterborough Road SW6 3EZ**

on Tuesday 22 November at 7 pm

The formal meeting will be followed by a talk by

Sue Pierson,
Local writer and author of many books on Fulham history who will be talking about her latest booklet, *Parson's Green: the Irregular Triangle*.

Doors open 6.30pm

PLANNING

Hurlingham Retail Park

Work has at last started on the site of the Hurlingham Retail Park on the corner of Wandsworth Bridge where the Currys PC World superstore was situated until a year ago. Planning approval to develop the 3.2 acre site was acquired by Londonnewcastle in 2014 for a 4-12 storeys mixed-use development, comprising residential apartments, commercial space and high quality shared external space including 24,000 sq. ft of private residents' gardens.



In February this year the site was sold to Rockwell and on August 4, Hammersmith and Fulham Council's Planning Committee gave permission for another 30 flats to be added to the development, taking the total to 269. The developers say 16% will be affordable. This despite the fact that in 2018 the council released a new version of its Local Plan, which said new housing developments should aim to have 50 per cent affordable housing. However, the development is human in scale and, crucially, for such a riverside development, a wide river walk is planned.

Enabling work involving the installation of site accommodation, new site hoardings, site clearance and a soft strip of the superstore has started in advance of demolition. That should begin in a few weeks and is scheduled to be completed by the end of the year. Construction will begin in January and should be completed by early 2025. To keep up to date on the work, see: <https://communitystream.co.uk/en/projects/hurlingham-retail-park>

The Aintree Estate

The first pictures of the Council's plans for 134 new flats on the Aintree Estate, facing Dawes Road and Pellant Road, to replace the Hartopp Point and Lannoy Point towers, have been published. The planning committee is scheduled to decide if the homes get the go-ahead this autumn.

Serious structural issues were found in the council-owned, 14-storey towers between 2017 and 2018. A 2019 report by design experts Arup warned: "An accidental extreme event could lead to the collapse of a disproportionately large part of the building." A council fire assessment in 2019 also found "serious issues" with the towers and other issues including damp and leaks were uncovered. It was decided it would be too expensive to fix the blocks, which each contained 56 flats and that knocking them down was the best option. They were demolished in May 2021.



If it goes ahead, the site will feature two stepped blocks – one up to five-storeys and the other up to seven-storeys with 112 affordable and 22 private homes. Building should start by summer 2023 and residents are expected to move into the new homes by autumn 2025. The development will be a mix of one and two-bed flats, plus around a dozen three-

bedroom properties, many with balconies. The project also features parking spots, 63 new trees, space for bikes, a gym, play area, grassy space and courtyards.

Clem Attlee Estate

Hammersmith & Fulham Council's plans to build 133 new, genuinely affordable homes in a 20 storeys tower opposite Normand Park in Fulham have been given the green light after winning a government challenge. The previous block on the site, only had 68 homes.

The plans – finally approved this month after a year-long delay – were 'called in' by the government last June. The project was controversial because it was not consistent with the Local Development Plan for tall buildings and also overshadowed a Grade I listed church. The approval letter highlighted that the secretary of state took into account that the proposal "would deliver a building of outstanding design quality and excellent living conditions" and that it "would have no unacceptable impact on the living conditions of existing residents of the area".

These new homes will be offered first to people living on the Clem Attlee estate and then to Fulham residents. 106 of them will be homes for local people on the council's waiting lists to rent. The rents will be set low at council-level. The other 27 homes will be for affordable intermediate rent.

5G Masts

An application to install a 20 metre high 5G mast at the entrance to Bishop's Avenue has been refused by H&F's Planning Committee.

The council's decision is a victory for local people who campaigned against the proposed eyesore which would have been close to All Saints Primary School and also sitting at the main entrance to Fulham Palace and Bishop's Park (ref 2022/01759/FUL).



The Piper Building

The Fulham Society was very pleased to hear from Historic England that the twenty-nine abstract decorative panels by celebrated artist John Piper and the mid century Piper Building itself, have been awarded Grade II listed status. The colourful fibreglass panels were commissioned to cover three sides of the exhibition block of the North Thames Gas Board headquarters on Peterborough Road. In 1997, the building was converted to private apartments.

North End Road

The former homes of the Elk Bar at Fulham Broadway and Boots on North End Road have become increasingly dilapidated after standing empty for years. Boots left the premises over two years ago while the Elk Bar closed its doors "after 15 amazing years" back in July 2018.

The Elk Bar site will be redeveloped to produce flats, a new store and possibly a new bar or restaurant. In the documents supporting the application, Nick Baker Architects say this scheme is an alternative to previous applications, which proposed a mix of offices and flats on the upper floors. The change to fully residential, creating nine new homes, is due to a lack of interest from commercial tenants. Improvements to the exterior of the Art Deco building include the restoration and cleaning of existing stone, new doors and windows, removal of lighting, cables and wires and suitable planting behind the existing parapet.

The Boots development proposes a small commercial site on part of the ground floor. The rest of the building will be an HMO (a house in multiple occupation) and several small flats.

Watermeadow Court, Sands End

The development site was previously home to three 1980s blocks containing 80 homes before they were demolished after they were deemed substandard back in 2008. Planning approval was eventually given in 2017 (2017/01841/FUL) for three blocks up to ten storeys high. There have been many applications since then varying the original plan, the most recent this summer when the council gave the go ahead for work to begin.



Property developer Mount Anvil and Peabody Homes plan to build 260 flats on this brownfield site in three housing blocks ranging from four to ten storeys with 13 disabled parking spaces. Half the properties are to be affordable.

COMMUNITY MATTERS

Fulham Jetty

In the past barges brought coal up the river to Fulham Wharf. Cranes on Fulham jetty would move it on to a conveyor belt to be sent to the Power Station to produce electricity. After the power station closed in the 1960s, the jetty was left derelict.



In 2012, it was included in plans by Sainsbury's and developers Barratt West London to redevelop the disused power station and surrounding land. At the time, it was intended for use as an ecological education centre. However, the ecological centre never really happened and the jetty was in fact used as a site office and marketing suite during the building of Phase One of Fulham Wharf.

The plan now is to open the disused jetty to the public as an educational and community centre. The retirement living specialists Riverstone, owners and operators of Phase 2 of the development, have renamed it Riverstone Pier and are refurbishing it so it can fulfil and expand its originally intended role. There will be educational activities provided by Hammersmith & Fulham Council together with the voluntary organisation, Urbanwise. Riverstone Living will also coordinate events, such as classes on local wildlife and training courses along with social events such as small concerts, wine tasting and art exhibitions.

TfL and Hammersmith Bridge

After months of protracted negotiations, Transport for London (TfL) and the Department for Transport (DfT) have finally agreed on a long-term package of funding for the capital's transport network. The current deal should ensure the financial stability of the organisation until 31 March 2024. TfL is to be given £1.2 billion up front to cover existing deficits and there is nearly £3.6 billion being made available for investment in the network. Projects that will be funded include the repair and full reopening of Hammersmith Bridge (with a caveat from the DfT that costs must be kept under control), new trains for the Piccadilly line and modernisation of others.

The deal also sees the establishment of an independent property company that will start on 20,000 homes on TfL's land within ten years.

The Mayor said that the "good news" was that the bailout means TfL will no longer have to make "devastating cuts" to services but added, "The government is still leaving TfL with a significant funding gap, meaning we will likely have to increase fares in the future and still proceed with some cuts to bus services. <https://content.tfl.gov.uk/tfl-settlement-letter-30-august-2022.pdf>

Future of the Bridge

On 10 October, H&F Council agreed that the bridge's engineers should seek planning permission for the innovative double-decker temporary truss solution. If approved, this would see a

temporary double-decker crossing placed within the existing structure and supported by the bridge's foundations. It would enable the bridge to reopen to motorists earlier than currently planned. Consultation will be required with key stakeholders including Historic England, the Environment Agency, PLA, Richmond Council and the MMO. Elements of the bridge that need repair, including the decking, would be lifted away using the temporary bridge as a works platform and transported by barges to an off-site facility for safer and easier repair and restoration.

In a separate report, also agreed, the Council set out its intention to appoint a private sector contractor to design, renovate, finance and maintain the bridge. H&F's construction costs and the ongoing operation and maintenance of the bridge would be funded by a toll or road user charge meaning that the users of the bridge, that is motorists, pay rather than the residents of the borough.

Earls Court

Earlier this summer, local MP Greg Hands encouraged residents to visit the Earls Court Development Company's Conversation Corner on Lillie Road to find out more about the plans for this huge development that will affect the local community. The development will include around 4,500 new homes on the 40-acre Earls Court site. The taller buildings will be located near the Empress State Building and near the West Cromwell Road and these buildings could potentially be as high as 45 storeys. It is proposed to submit plans for the southern section in late 2023.

The exhibition of the development plans has closed but residents can always email the Earls Court Development Company (ECDC) (info@earlscourtdevco.com) to share your views. Greg Hands is also keen to hear the views of residents, so please copy him into any correspondence sent to ECDC (mail@greghands.com).

New Fireboats

London Fire Brigade welcomed two brand-new "state of the art" fire and rescue river boats into its fleet at the beginning of September as part of a £40 million investment from City Hall. The two new vessels, each worth around £1.8 million, are named after Second World War firefighters, Harry Errington and Gillian Tanner.



The two new boats can travel at a maximum speed of 40 knots – twice as fast as the boats they are replacing. They are each fitted with high-powered hoses that allow crews to fight fires from the river as well as a hydraulic crane and thermal imaging camera that can be used to carry out rescues from the water. They will provide a significantly improved mass rescue capability with each boat capable of carrying up to 45 people.

It comes as part of a wider investment in modernising the London Fire Brigade in the wake of the Grenfell Tower fire in 2017 which killed 72 people. Last year, as part of the same investment, firefighters in London became the first in the UK to gain access to 64 metre turntable ladders capable of rescuing people from high-rise buildings.

IN BRIEF

Most Often Closed Station

Recently released figures show that since 2019 Fulham Broadway station has been closed more often than any other on the network. There have been 18 incidents during that period in which the station was shut for 79 hours due to staff absences, customer incidents and signaling failures.

North End Road Post Office

The Post Office in the Co-op at 254 North End Road is being threatened with closure. It moved there when the Fulham Crown Post Office closed in 2003. At the time Post Office Ltd assured residents there would continue to be a major branch on or just off North End Road. The Post Office has been advised by the Co-op to leave by September 2023.

Housing

There are currently around 3,000 people waiting for affordable housing in the borough. Hammersmith and Fulham was rated the worst authority in the country for damp and mouldy homes by the Housing Ombudsman (*Spotlight on damp & mould*, October 2021). The Council has pledged to spend £600 million on refurbishing and fixing properties in the next 12 years.

20 mph area

Most of the borough's roads are limited to 20mph and only a few main roads are still at 30mph. Wandsworth Bridge Road and bridge are the latest to become 20 mph. Perhaps now Satnavs will no longer prioritise WBR over other bridge crossings. 20mph is significantly safer; at 30 mph there is a 20% chance a pedestrian will be killed; at 20mph this goes down to 2.5%.

Adopt a Tree

The Council have planted more than 2,000 trees over the past year and need help to keep the new trees thriving. If you have a

young tree in your neighbourhood, do please water it. Most young trees have a watering pipe so fill the tube until it's full. Trees help clean our air, keep our streets cool, protect against flooding.

Carrara Wharf



People living in Carrara Wharf were shocked to have been asked to contribute to a £8.2m upgrade of the flood defence by their homes. The Environment Agency will pay 90 per cent of the cost but the Carrara Wharf management group has been asked to pay the remaining 10 per cent. This could leave residents with a bill of £9,213 on average. Residents were told responsibility for the flood defences outside their home rested with them under an old law – the *Metropolis Management Amendment Act 1879*.

The Library of Things

The Library of Things is proving popular with residents. There have been more than 300 rentals since it opened in late June 2022. It provides a practical way for you to save money and cut clutter by renting household items you don't often need. Tools that help residents with their DIY tasks, host movie nights and keep their carpets clean have been particularly popular. The most rented items in September were:

- Carpet cleaner
- Cordless drill
- Heavy duty pressure washer
- SDS drill
- Hand sander
- Extendable ladder
- Projector



MUSIC IN THE BOROUGH

Fulham Belles

This female choir was founded in Fulham in 2013 and is open to ladies who love to sing. They rehearse weekly during term-time in south west London and perform regularly for charity fundraising events. If you are interested in joining the choir or hiring them for a charity event, do get in touch.



The choir was founded and is directed by Anna Boucher, who studied music at Durham University and vocal studies at the Guildhall School of Music and Drama before embarking on a solo career of opera and recital. Anna teaches singing at St. Paul's Girls' School and works privately as a vocal coach. <https://www.fulhambelles.co.uk/>

Fulham Brass Band



Formed in 1895, Fulham Brass Band has a long history of music making and strong links with the community. They play an exciting mix of events from high profile TV gigs to community engagements and traditional brass band contests. A small group played recently at an event in Bishops Park. They rehearse every Monday evening from 7.30pm to 10.00pm in St Etheldreda's Church. If you are interested in playing with them or to book the band, you can email via their website. <http://www.fulhambrassband.co.uk/>

Fulham Camerata

Fulham Camerata is a non-auditioning amateur chamber choir of around thirty-five voices based in south-west London. It is supported by an ensemble of semi-professionals, allowing the choir to tackle exciting repertoire and maintain high musical standards.

All levels are welcome, although the repertoire can be challenging. Main Choir singers do not need to audition. If you are interested in joining, simply email or phone to arrange to go to a rehearsal with no commitment. Rehearsals are 7.30-9.30pm on Tuesdays at Holy Cross Church with end-of-term concerts usually held there or at St Mary's Church, Putney Bridge. Their next concert is the *Monteverdi Vespers* on Sunday 20 November, 6.30-8.30pm, at Holy Cross Church Fulham. <https://www.fulhamcamerata.com/>



FULHAM SOCIETY

Annual General Meeting 2022

Everyone is welcome at the Society's AGM on Tuesday 22 November at 7.00 pm at the Sands End Arts & Community Centre (SEAC), Peterborough Road SW6 3EZ. Doors open at 6.30pm and there will be a pay bar.

The formal meeting will be followed by a talk by Sue Pierson, a local writer and author of many books on Fulham history. She will be talking about her latest booklet, *Parson's Green: the Irregular Triangle*. Copies of the booklet will be available for sale. Other works by Sue include histories of St Matthew's Church Fulham, Peterborough School, Charlotte Sullivan and Peterborough House.

This is the first time the Fulham Society's AGM has been held at the new community centre which replaces the Sands End Community Centre in Broughton Road closed in 2011. It is an interesting building. It was designed by Mæ Architects and has won a number of awards. The design references its heritage, being influenced by the shape of the 19th century glasshouses of horticulturist James Veitch that used to be on the site. Clancarty Lodge, the original Edwardian park lodge and café, dating from 1903, has been restored and incorporated into the new complex and is now known simply as the Lodge. The centre has a café, The Walnut Tree, with seating indoors and in the landscaped courtyard.

The centre was only completed a year ago, was funded by Tideway and Chelsea Football Club and is now run by a charitable trust.

Summer Party



We had another excellent, very well attended summer party at Fulham Palace on the evening of 19 July. Yet again we were fortunate in the weather. It was during one of those many very hot spells we had this year although just as the last guests were leaving, there was a spectacularly fierce and heavy shower of rain.

We were also delighted to welcome the winners of the Front Garden competition and present them with their prizes.

Front Garden Competition

Congratulations to everyone who took part in the competition to make Fulham look colourful and beautiful as well as contributing to the environment. We received a great selection of beautiful photographs from all parts of the borough and the judges had a difficult decision to make.



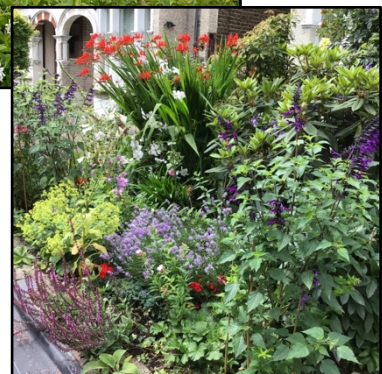
Front Garden Prize Winners

1 st prize	John McMahon
2 nd prize	Peter Friedlander
3 rd prize	Harriet Brown
Consolation	Clare Ford-WilleShahbenderian
Special prize	Sir Eldred & Lady Parry



Window Boxes & Prize Winners

1 st prize	Tom Heath & Calbert Bennett
2 nd prize	Una McCann
3 rd prize	Alex Parker
Consolation	Christina Zoltowska



RETAIL CORNER

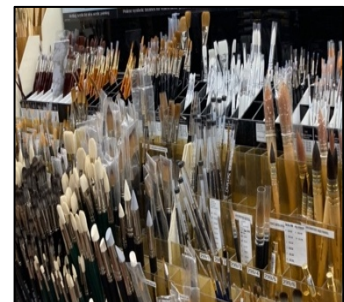
Jacksons Art Stores

How many of you have noticed the shop under the railway arches by Putney Bridge station?



Founded in London in 2000, Jackson's offers a vast range of art materials to artists from all over the world. There are shops in Gloucester, Dalston and Fulham and, of course, you can shop online. As a team of practising artists, they are dedicated to helping you find the colours, surfaces, brushes, and tools that you need for your work. Efforts are made to ensure that you will always get the best deal and they check 100s of prices weekly, to offer the lowest prices.

The Fulham shop is split over two floors and the upper floor, where the canvases are, doesn't have wheelchair accessibility. However, staff are more than happy to bring products downstairs to show you. Nor does it stock the full Jackson's product so if it is something particular you are after, do call the shop to confirm its availability. <https://www.jacksonsart.com/>



SOME LOCAL EVENTS

Farmers Market

The Farmers Market will be back on Sunday 30 October, no longer in Bishops Park but at All Saints Primary School, Bishops Park Road. Every Sunday from 10 am to 2 pm.

Christmas Markets

Two Christmas Markets are planned this year: one on Saturday 3 December in King Street, Hammersmith, the other is the North End Road Christmas Market on Saturday 17 December.

Fulham Fest at Sands End Community Centre, 21-22 October

Fulham Fest is a chamber music festival offering a diverse range of concerts. Presenting the favourites you know and love, new music, undiscovered gems and electronic music, the eclectic programmes give something to entertain and challenge any listener. Find out more at their website:

<https://www.fulhamfest.com/>

Battersea Power Station

Not quite in our area but worth noting. The £9 billion redevelopment project around the iconic Grade II listed power station opened to the public for the first time on October 14. The scheme also includes thousands of new homes, shops, bars, restaurants, cafés, offices, a pedestrianised high street and more than 19 acres of public space.

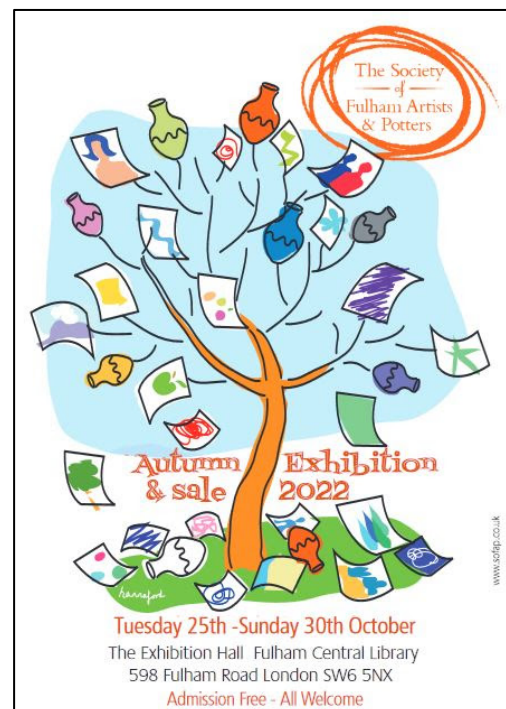
A 'Festival of Power' is being held from October 22 to 23 in celebration. This will be a free family-friendly event with lots of live performances from local artists and musicians. You can sometimes travel by boat from Putney Pier but you need to check the time table and they do not run at weekends. There is also a new tube station (Northern line).

Roca London Gallery, Townmead Road

The Spanish company's Roca London Gallery is a stylish celebration of design, innovation and sustainability. The gallery, located near Imperial Wharf Station, hosts social and cultural events all year round. The interior of the gallery is a stunning space designed by Zaha Hadid. The flow of the multi-functional space is inspired by the movement of water. This is a modern gallery where business meets art as the themes of design, innovation, sustainability and wellness going forward are explored.

Fulham Palace

The Palace is one of London's most interesting historical buildings as it's made up of Tudor, Georgian and Victorian architecture. It was the country home of the Bishops of London from about 700 to 1973. To make the most of the past and present visit the Fulham Palace website and book onto a guided tour of the palace and the garden.



Remember to check out the Fulham Society website. It has planning news, local news and a brief history of the area. If you like walking and would like to know more about Fulham, see the self-guided walks.

<https://www.fulhamsociety.org>

COMMITTEE MEMBERS

VICE-PRESIDENTS	Patrick Ground QC, Lord Carrington of Fulham, Greg Hands MP, Andy Slaughter MP
CHAIRMAN	Isobel Hill-Smith
VICE-CHAIRMAN	Niel Redpath
HON. TREASURER	David Chamberlain
HON. SECRETARY	Barbara Skorupska
HON. MINUTES SEC.	Binky Aylmer
HON. MEMBERSHIP SEC.	Mathilde Meyrieux
MEMBERS	Maya Donelan, Fiona Fowler, Kim Hawkins, Clifford Rosen, Maria Sturdy-Morton

Committee Meetings are held on the 3rd Monday of each month (except August & December)

CONTACT US



Address 116 Hurlingham Road, SW6 3NP



Website [fulhamsociety.org](https://www.fulhamsociety.org)



Email info@fulhamsociety.org



Instagram @fulhamsociety



Twitter @fulhamsociety

SUBSCRIPTIONS

If you have not yet paid your subscription for 2022-23 (due 27 March), please do so as soon as possible otherwise you may find you no longer receive the Fulham Society's Newsletter.

Charity no. 262396